

## Section I — +/– Feet &amp; Inches

**407**

---

1.  $9' 10'' - 9' 7'' =$

5.  $17' 9'' - 9' 5'' =$

2.  $10' 6'' + 9' 3'' =$

6.  $12' 2'' - 1' 9'' =$

3.  $11' 9'' - 1' 5'' =$

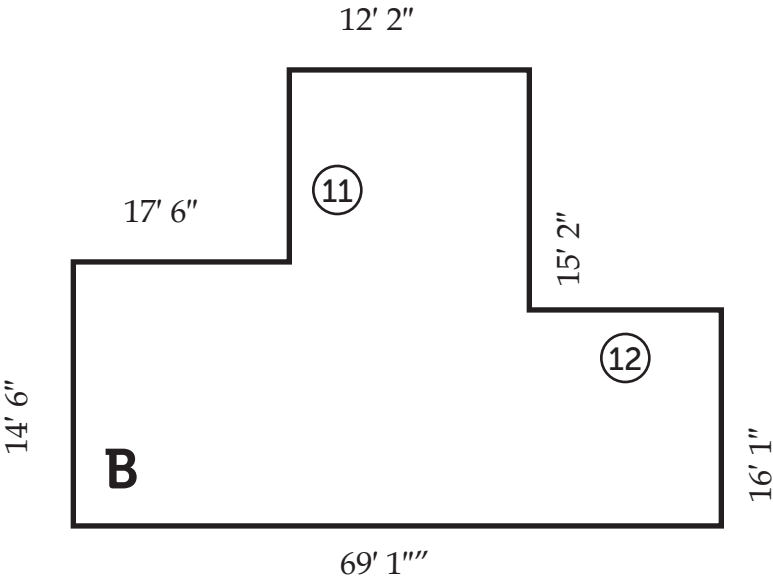
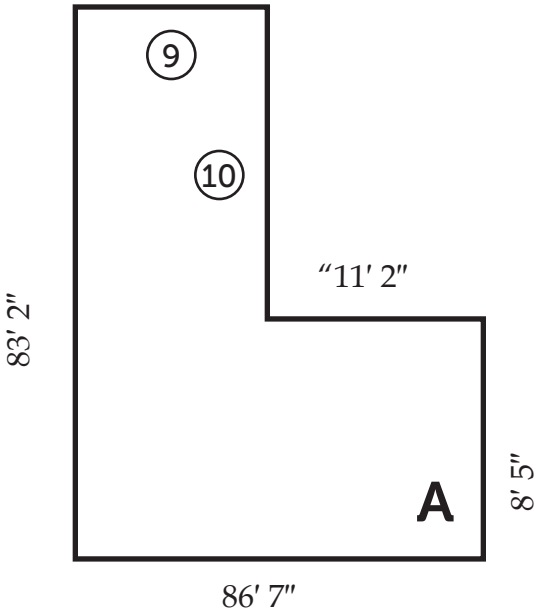
7.  $10' 11'' + 9' 1'' =$

4.  $13' 10'' - 4' 10'' =$

8.  $10' 3'' + 9' 11'' =$

DRAWING IS NOT TO SCALE

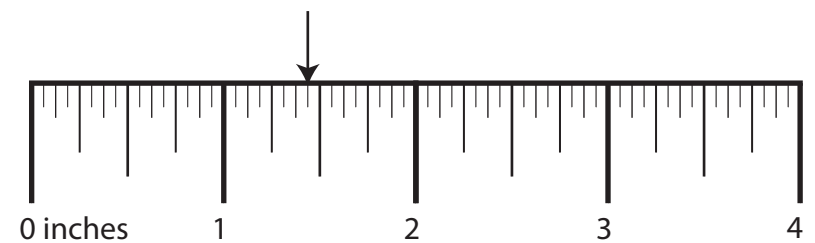
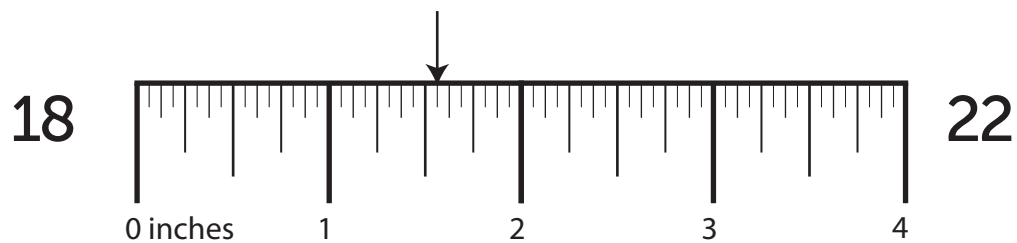
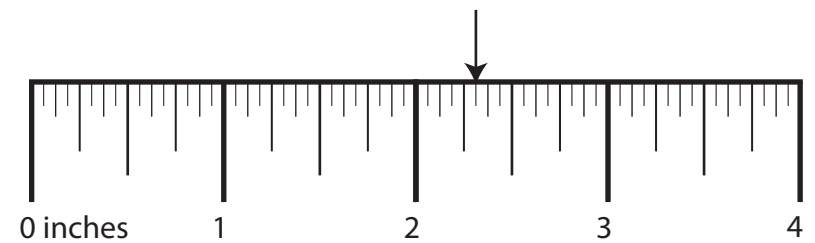
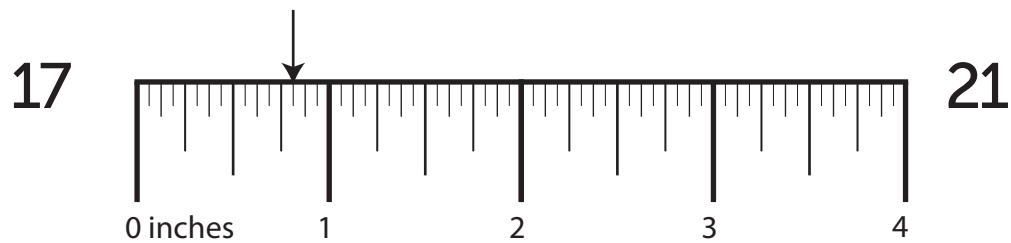
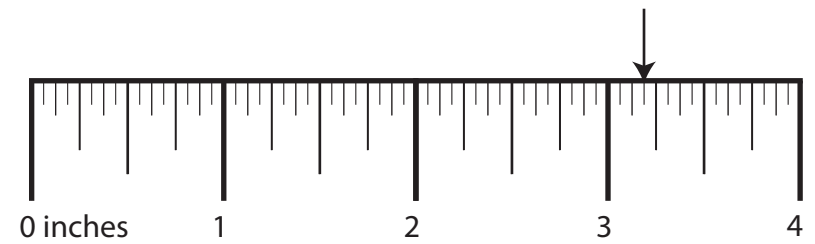
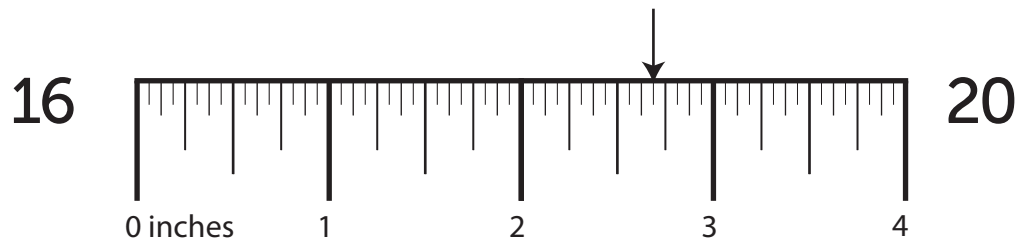
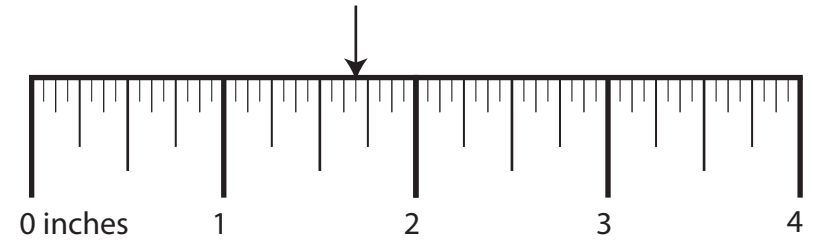
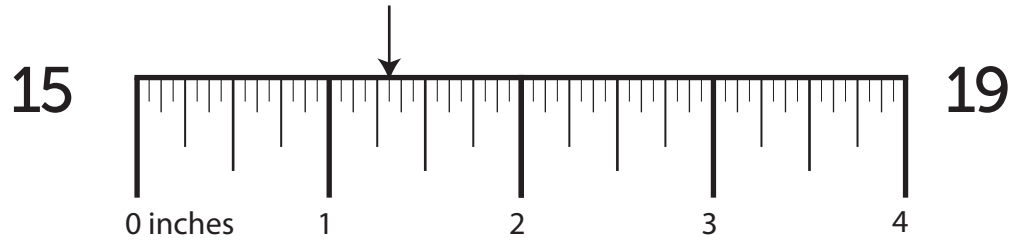
407



Side	Length	Side	Length	Shape	Perimeter
9		11		A	13
10		12		B	14

# DRAWING IS NOT TO SCALE

## Section III — Ruler Measurements



## Section IV — More/Less Than

# 407

---

23. What is  $\frac{5}{16}$  less than  $4 \frac{1}{8}$ ?      27. What is  $\frac{1}{2}$  less than  $2 \frac{1}{4}$ ?
24. What is  $\frac{1}{2}$  less than  $2 \frac{1}{4}$ ?      28. What is  $\frac{1}{4}$  less than  $4 \frac{3}{8}$ ?
25. What is  $\frac{5}{16}$  less than  $1 \frac{1}{2}$ ?      29. What is  $\frac{5}{16}$  less than  $5 \frac{1}{4}$ ?
26. What is  $\frac{1}{2}$  less than  $5 \frac{1}{2}$ ?      30. What is  $\frac{1}{4}$  more than  $4 \frac{1}{8}$ ?

## Section V — Nail Penetration & Screw Hole Bits

How far will a ...

What size drill bit will you need to drill a ...

- |     |   |     |                                      |
|-----|---|-----|--------------------------------------|
| 31. | 11 ½ common gauge nail penetrate a 3/4" dry rafter? | 35. | clearance hole for a 4 gauge screw?  |
|     |   |     |                                      |
| 32. | 2 common gauge nail penetrate a 2 ½" dry board?     | 36. | pilot hole for a 18 gauge screw?     |
|     |   |     |                                      |
| 33. | 10 penny nail penetrate a 2" green rafter?          | 37. | clearance hole for a 18 gauge screw? |
|     |   |     |                                      |
| 34. | 9 common gauge nail penetrate a 3 ½" green beam?    | 38. | pilot hole for a 8 gauge screw?      |