

## Section I — +/– Feet &amp; Inches

**105**

---

1.  $18' 10'' - 1' 6'' =$

5.  $15' 11'' - 2' 11'' =$

2.  $11' 11'' - 4' 7'' =$

6.  $17' 10'' + 17' 5'' =$

3.  $14' 6'' - 1' 11'' =$

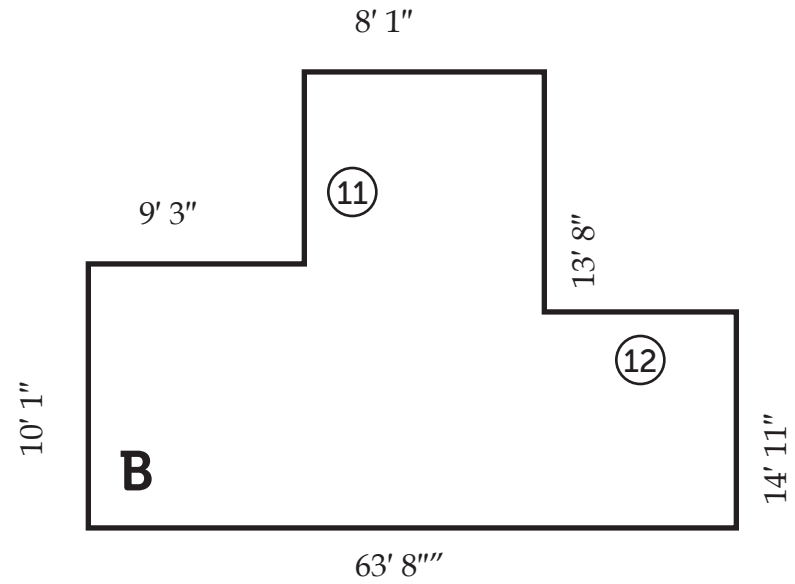
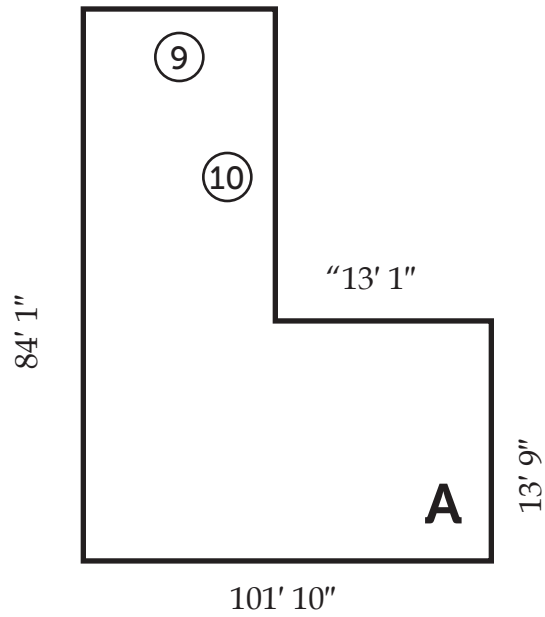
7.  $11' 6'' - 4' 8'' =$

4.  $13' 4'' + 16' 8'' =$

8.  $18' 1'' - 4' 4'' =$

DRAWING IS NOT TO SCALE

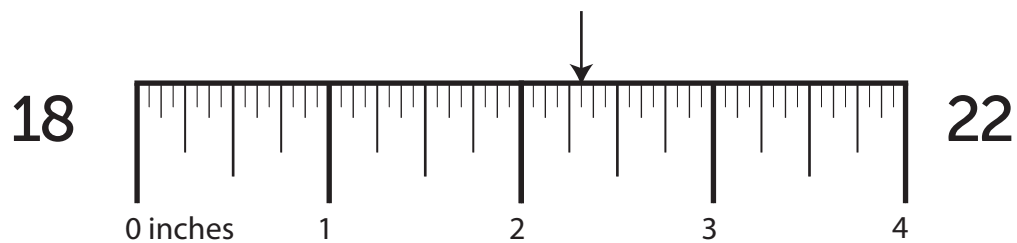
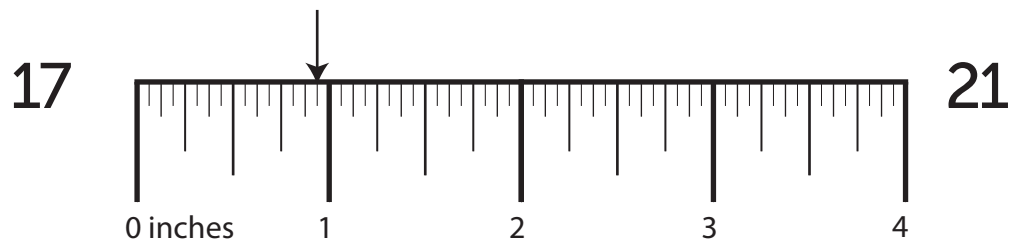
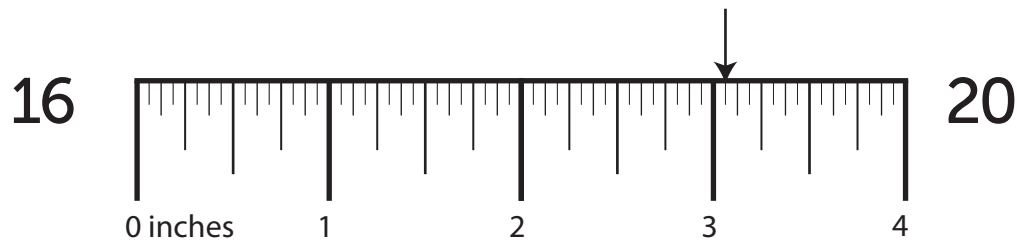
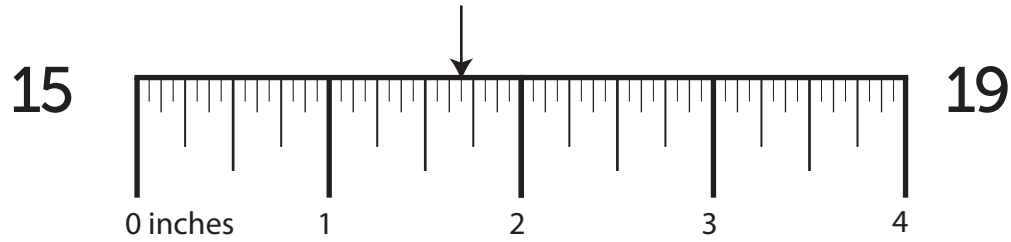
# 105



Side	Length	Side	Length	Shape	Perimeter
⑨	_____	⑪	_____	A	⑬ _____
⑩	_____	⑫	_____	B	⑭ _____

# DRAWING IS NOT TO SCALE

## Section III – Ruler Measurements



## Section IV – More/Less Than

**105**

---

23. What is  $\frac{1}{16}$  more than  $4\frac{3}{8}$ ?      27. What is  $\frac{1}{2}$  more than  $3\frac{1}{4}$ ?
24. What is  $\frac{3}{16}$  less than  $3\frac{1}{8}$ ?      28. What is  $\frac{3}{16}$  less than  $1\frac{3}{8}$ ?
25. What is  $\frac{1}{16}$  less than  $4\frac{1}{4}$ ?      29. What is  $\frac{1}{2}$  less than  $1\frac{1}{2}$ ?
26. What is  $\frac{1}{2}$  more than  $2\frac{5}{16}$ ?      30. What is  $\frac{1}{8}$  more than  $4\frac{3}{8}$ ?

## Section V – Nail Penetration & Screw Hole Bits

How far will a ...

What size drill bit will you need to drill a ...

31. 15 common gauge nail penetrate a  $\frac{1}{2}$ " green girder? 35. clearance hole for a 11 gauge screw?

32. 20 penny nail penetrate a 1" green beam? 36. countersink hole for a 12 gauge screw?

33. 60 penny nail penetrate a  $\frac{5}{8}$ " green rafter? 37. clearance hole for a 5 gauge screw?

34. 11  $\frac{1}{2}$  box gauge nail penetrate a  $2\frac{1}{2}$ " green joist? 38. countersink hole for a 9 gauge screw?