

## Section I — +/– Feet &amp; Inches

**103**

---

1.  $16' 2'' + 14' 9'' =$

5.  $18' 1'' - 9' 5'' =$

2.  $15' 8'' + 12' 5'' =$

6.  $17' 6'' - 6' 3'' =$

3.  $13' 1'' - 9' 4'' =$

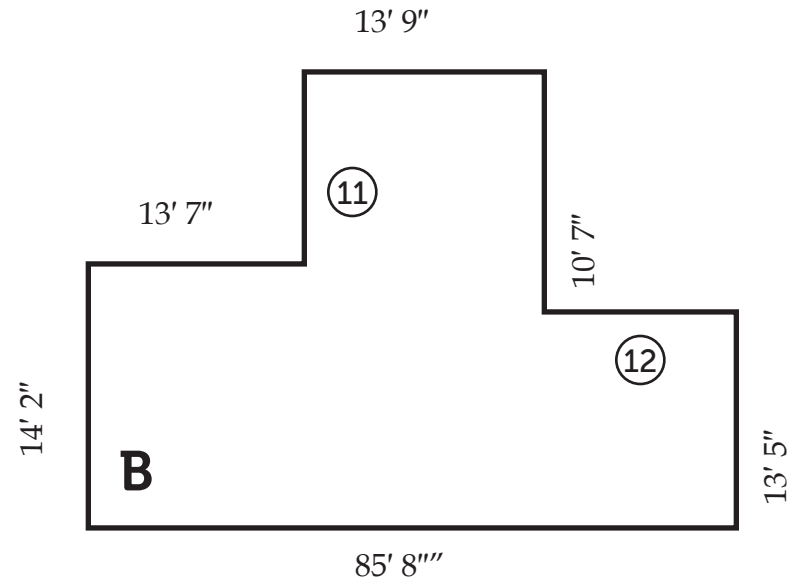
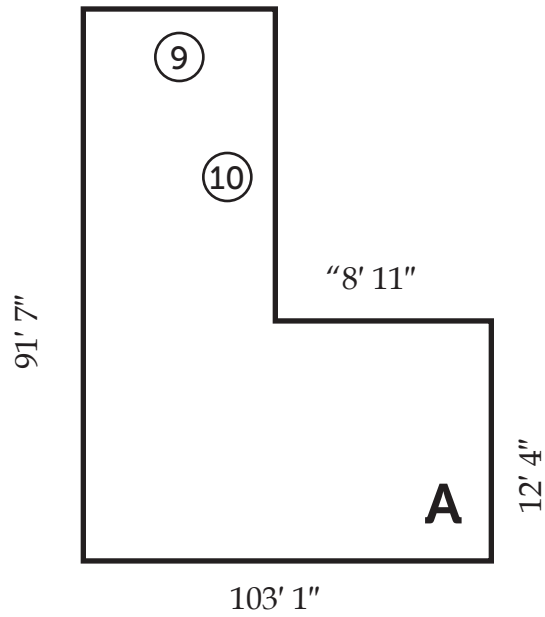
7.  $14' 5'' + 13' 9'' =$

4.  $8' 3'' + 13' 2'' =$

8.  $16' 1'' + 12' 11'' =$

DRAWING IS NOT TO SCALE

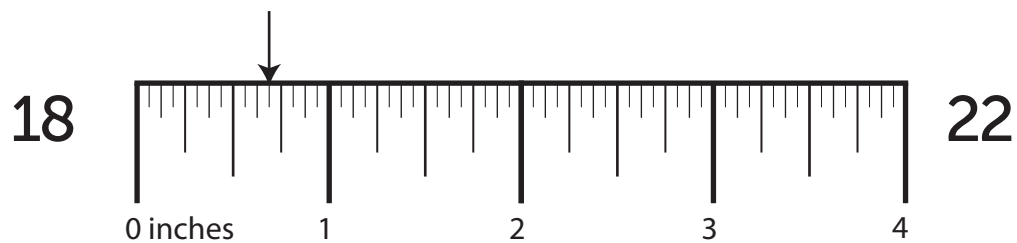
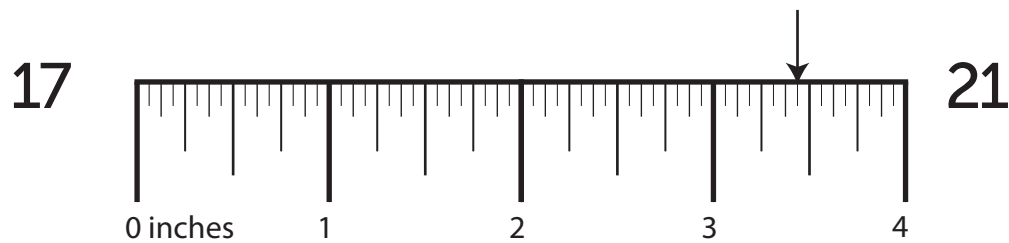
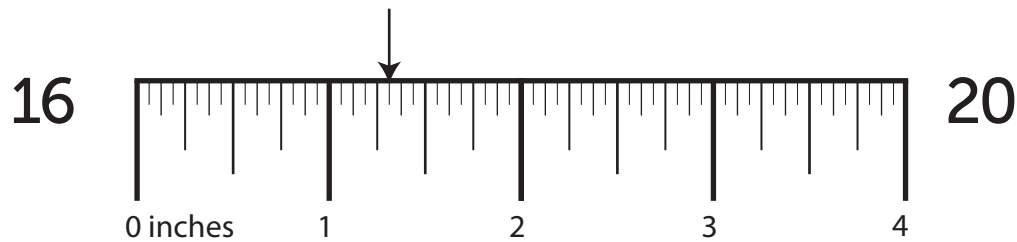
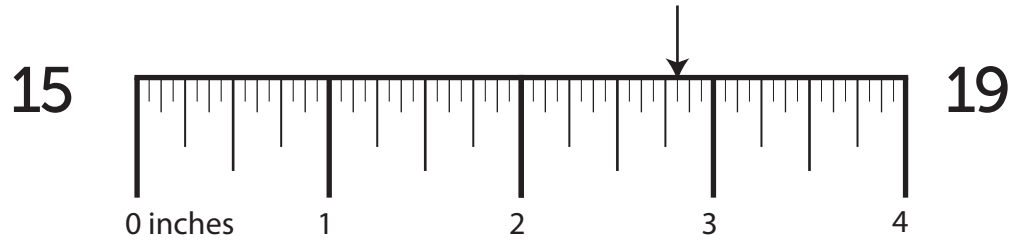
# 103



Side	Length	Side	Length	Shape	Perimeter
⑨	_____	⑪	_____	A	⑬ _____
⑩	_____	⑫	_____	B	⑭ _____

# DRAWING IS NOT TO SCALE

## Section III – Ruler Measurements



## Section IV – More/Less Than

103

---

23. What is  $\frac{3}{8}$  less than  $3 \frac{1}{2}$ ?      27. What is  $\frac{1}{8}$  more than  $5 \frac{1}{2}$ ?
24. What is  $\frac{1}{16}$  less than  $4 \frac{1}{2}$ ?      28. What is  $\frac{3}{8}$  more than  $3 \frac{1}{16}$ ?
25. What is  $\frac{3}{16}$  less than  $1 \frac{1}{2}$ ?      29. What is  $\frac{3}{16}$  more than  $2 \frac{1}{2}$ ?
26. What is  $\frac{1}{4}$  less than  $2 \frac{1}{8}$ ?      30. What is  $\frac{3}{16}$  less than  $2 \frac{3}{8}$ ?

## Section V — Nail Penetration & Screw Hole Bits

How far will a ...

What size drill bit will you need to drill a ...

31. 30 penny nail penetrate a 1" green rafter?

35. clearance hole for a 10 gauge screw?

32. 2 penny nail penetrate a 2 1/2" green mast?

36. clearance hole for a 5 gauge screw?

33. 20 penny nail penetrate a 2" dry beam?

37. countersink hole for a 9 gauge screw?

34. 10 1/2 box gauge nail penetrate a 1 1/2" dry joist?

38. countersink hole for a 2 gauge screw?