

Section I – +/– Feet & Inches

220

1. $14' 4'' + 11' 6'' =$

5. $14' 3'' - 5' 5'' =$

2. $17' 11'' - 2' 4'' =$

6. $8' 7'' - 3' 6'' =$

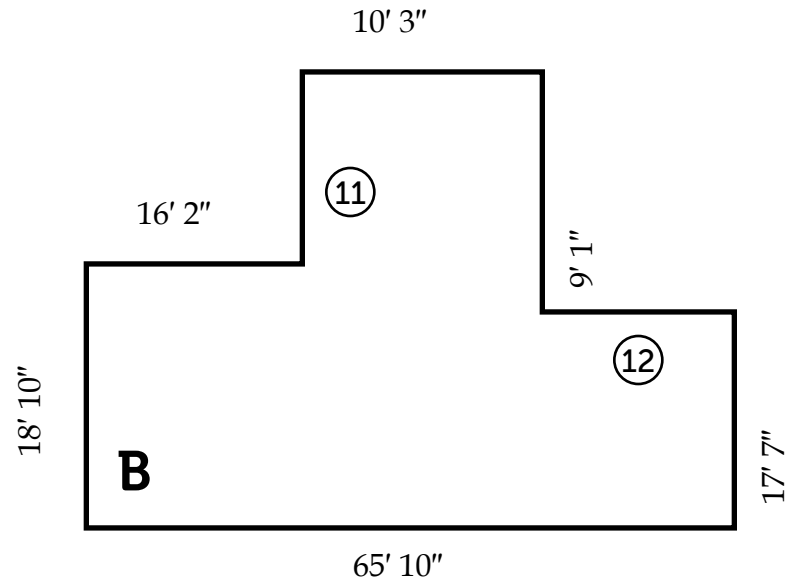
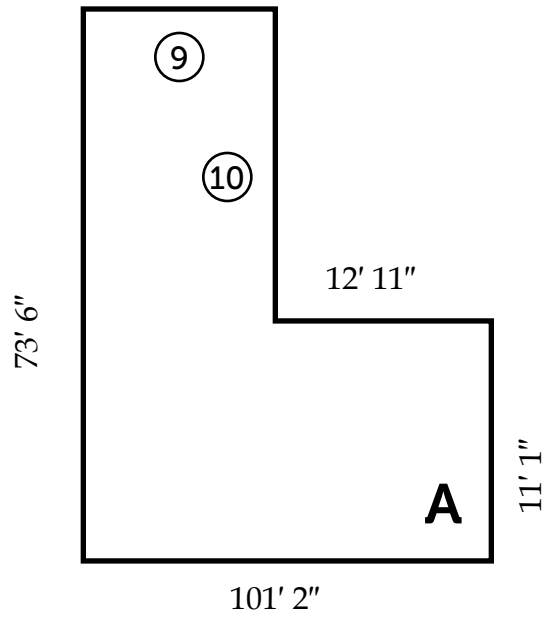
3. $12' 10'' - 11' 6'' =$

7. $15' 8'' + 8' 9'' =$

4. $17' 2'' - 8' 5'' =$

8. $18' 5'' - 5' 7'' =$

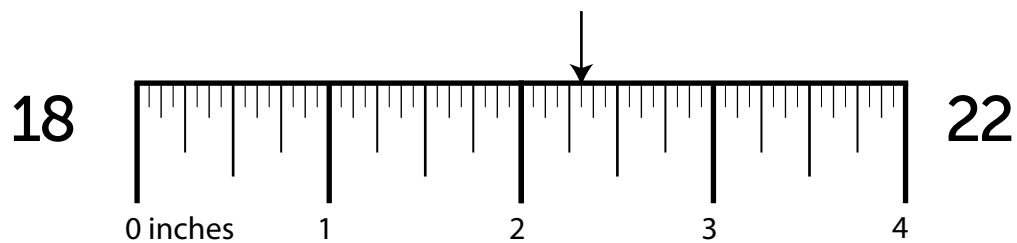
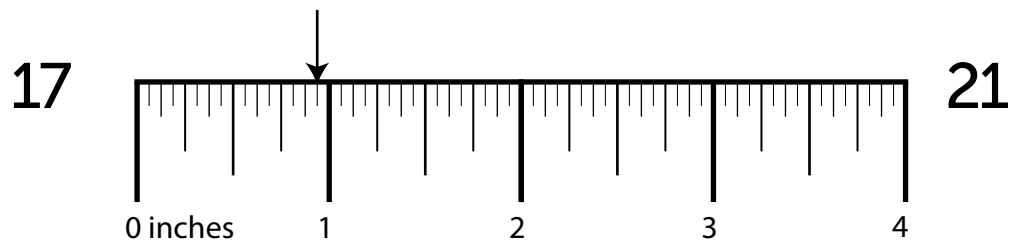
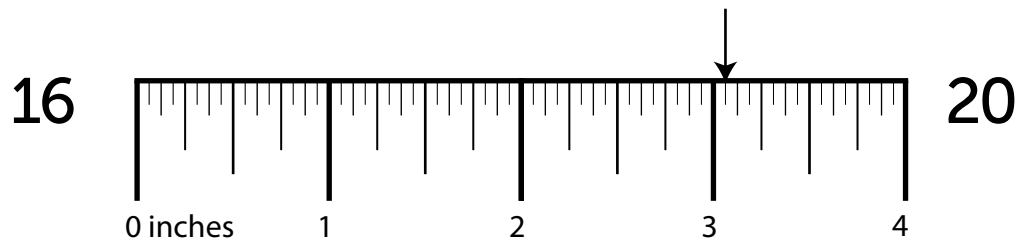
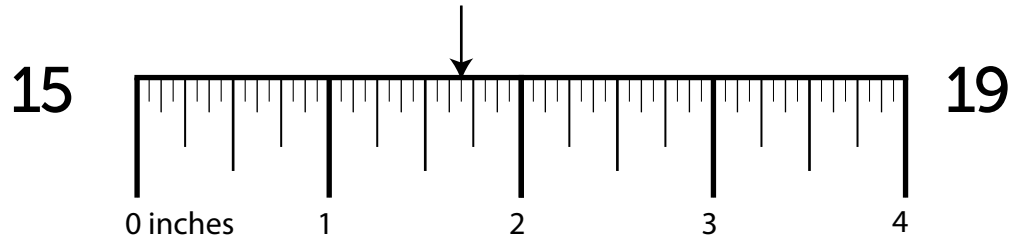
DRAWING IS NOT TO SCALE



| Side | Length | Side | Length | Shape | Perimeter |
|------|--------|------|--------|-------|-----------|
| ⑨ | _____ | ⑪ | _____ | A | ⑬ _____ |
| ⑩ | _____ | ⑫ | _____ | B | ⑭ _____ |

DRAWING IS NOT TO SCALE

Section III – Ruler Measurements



Section IV — More/Less Than

23. What is $\frac{1}{8}$ more than $3\frac{1}{4}$?

27. What is $\frac{3}{16}$ more than $4\frac{1}{4}$?

24. What is $\frac{1}{4}$ more than $2\frac{1}{2}$?

28. What is $\frac{3}{16}$ less than $3\frac{1}{4}$?

25. What is $\frac{1}{16}$ less than $4\frac{1}{4}$?

29. What is $\frac{1}{8}$ less than $3\frac{1}{4}$?

26. What is $\frac{1}{4}$ more than $5\frac{1}{2}$?

30. What is $\frac{5}{16}$ more than $1\frac{3}{16}$?

Section V – Nail Penetration & Screw Hole Bits

How far will a ...

What size drill bit will you need to drill a ...

31. 16 penny nail penetrate a 2 ½" green girder?

35. clearance hole for a 18 gauge screw?

32. 10 penny nail penetrate a 3 ½" green beam?

36. countersink hole for a 12 gauge screw?

33. 5 common gauge nail penetrate a 1" green girder?

37. countersink hole for a 3 gauge screw?

34. 16 penny nail penetrate a 1 ¼" dry board?

38. countersink hole for a 6 gauge screw?