

Section I – +/- Feet & Inches

217

1. $11' 11'' - 11' 9'' =$

5. $8' 8'' + 16' 10'' =$

2. $15' 1'' - 7' 8'' =$

6. $17' 10'' - 11' 1'' =$

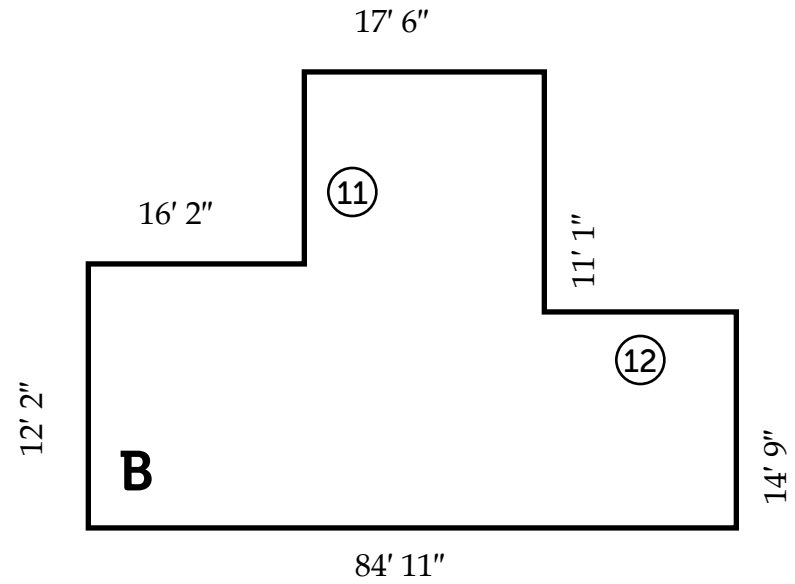
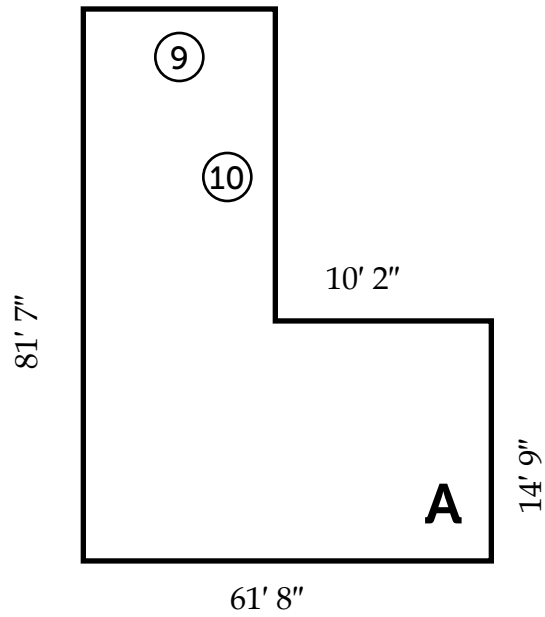
3. $15' 11'' + 16' 7'' =$

7. $12' 11'' - 1' 3'' =$

4. $12' 11'' - 10' 3'' =$

8. $16' 2'' - 10' 1'' =$

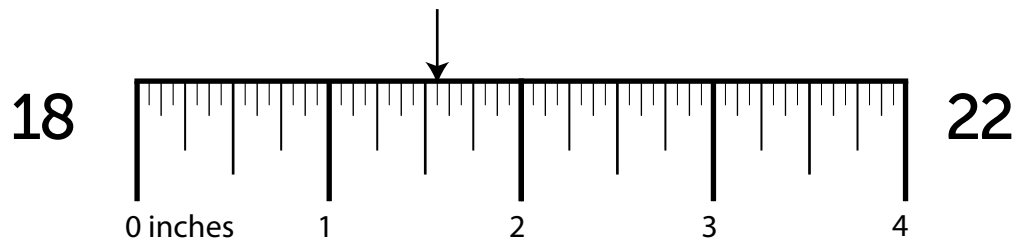
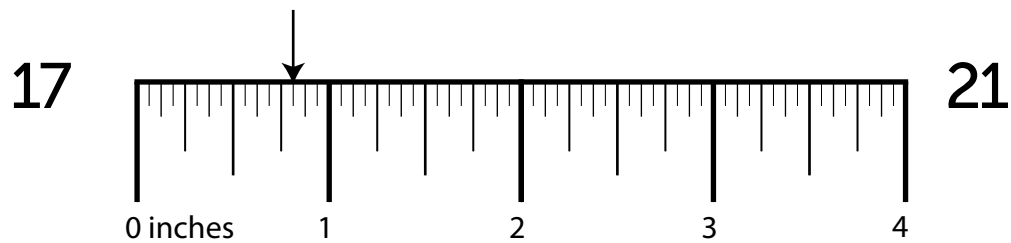
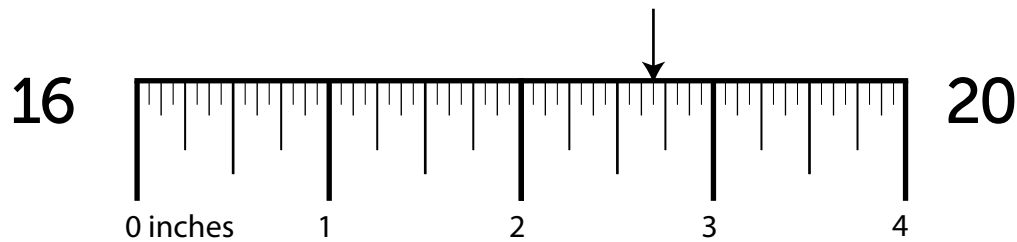
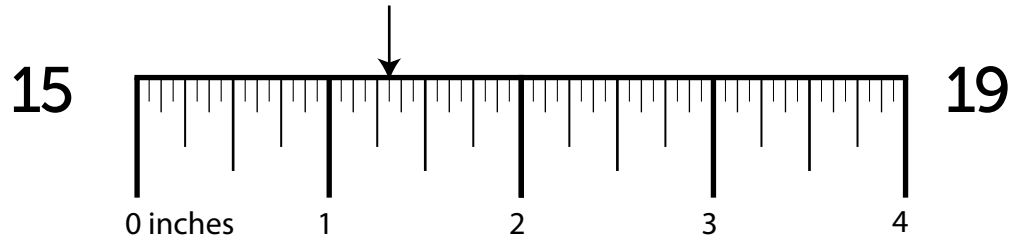
DRAWING IS NOT TO SCALE



Side	Length	Side	Length	Shape	Perimeter
⑨	_____	⑪	_____	A	⑬ _____
⑩	_____	⑫	_____	B	⑭ _____

DRAWING IS NOT TO SCALE

Section III – Ruler Measurements



Section IV — More/Less Than

23. What is $\frac{3}{8}$ more than $3 \frac{1}{2}$? 27. What is $\frac{1}{2}$ more than $5 \frac{3}{8}$?
24. What is $\frac{3}{8}$ more than $5 \frac{3}{8}$? 28. What is $\frac{1}{2}$ less than $4 \frac{1}{2}$?
25. What is $\frac{1}{8}$ more than $5 \frac{1}{4}$? 29. What is $\frac{1}{2}$ less than $2 \frac{1}{16}$?
26. What is $\frac{3}{8}$ less than $4 \frac{1}{16}$? 30. What is $\frac{1}{8}$ less than $1 \frac{5}{16}$?

Section V – Nail Penetration & Screw Hole Bits

How far will a ...

What size drill bit will you need to drill a ...

31. 15 ½ box gauge nail penetrate a 5/8" green joist?
32. 11 ½ common gauge nail penetrate a 1" green dimension?
33. 12 ½ common gauge nail penetrate a 2" green rafter?
34. 20 penny nail penetrate a 1 ½" green dimension?
35. countersink hole for a 9 gauge screw?
36. countersink hole for a 2 gauge screw?
37. clearance hole for a 4 gauge screw?
38. countersink hole for a 8 gauge screw?