

Section I – +/– Feet & Inches

213

1. $11' 8'' + 13' 7'' =$

5. $9' 5'' + 15' 2'' =$

2. $13' 7'' - 7' 11'' =$

6. $15' 7'' + 9' 4'' =$

3. $18' 9'' - 5' 7'' =$

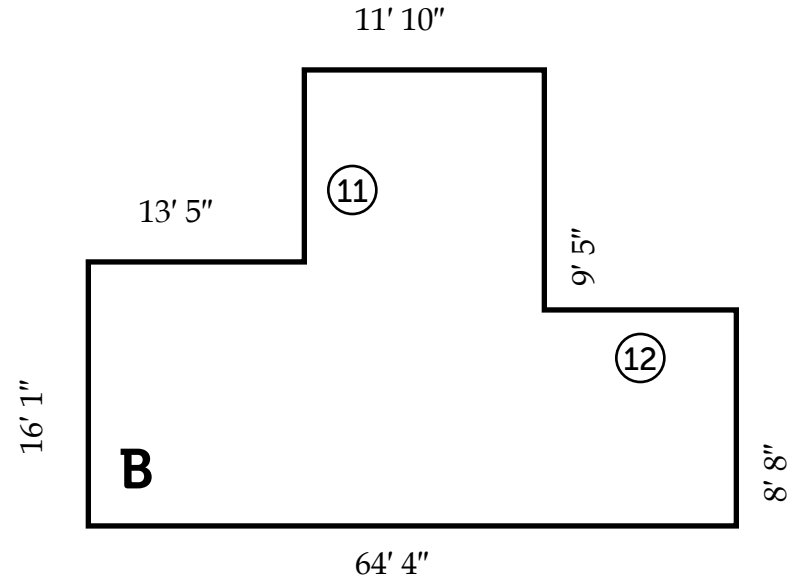
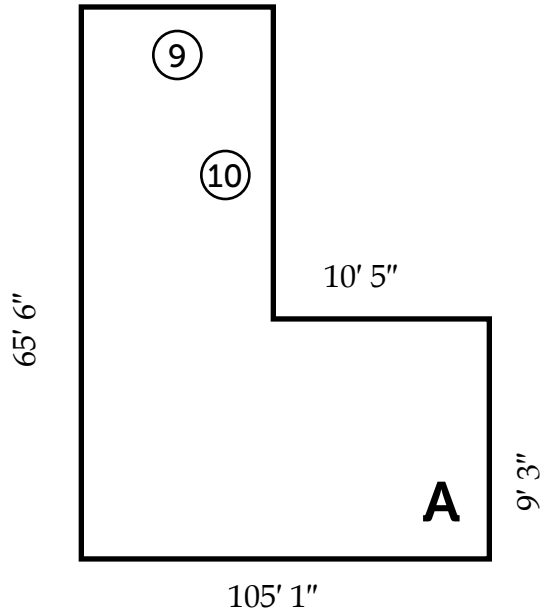
7. $15' 1'' + 10' 4'' =$

4. $15' 9'' - 9' 5'' =$

8. $16' 10'' - 6' 3'' =$

DRAWING IS NOT TO SCALE

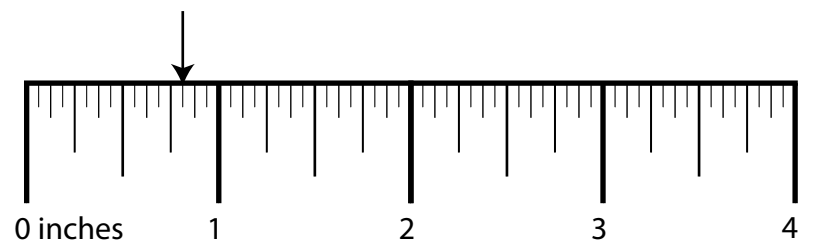
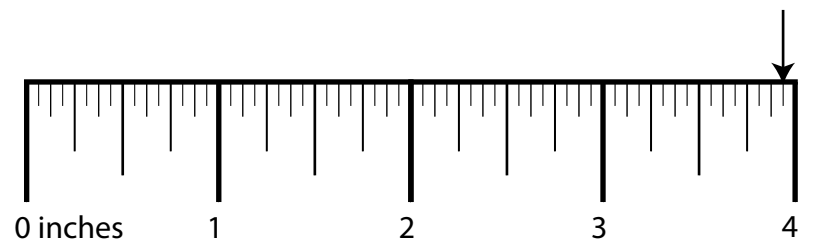
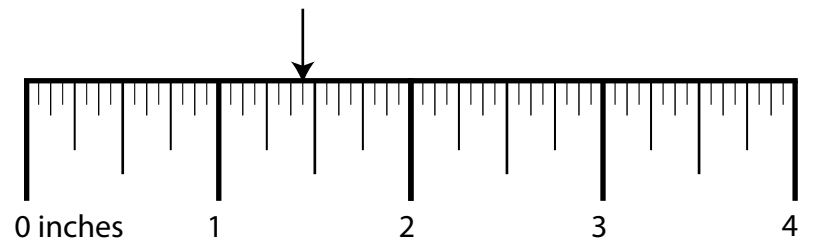
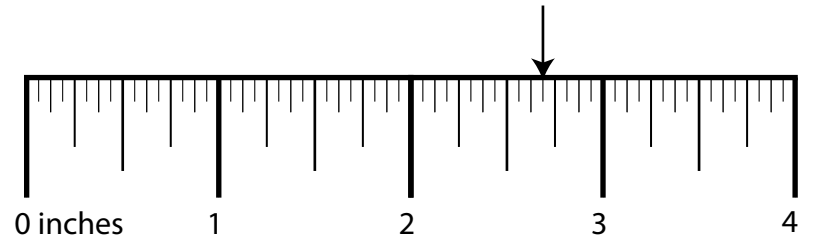
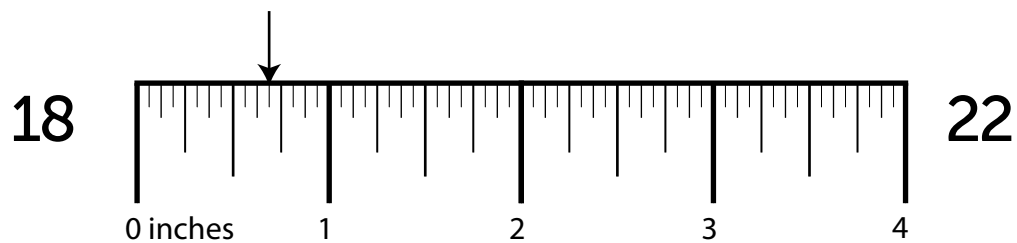
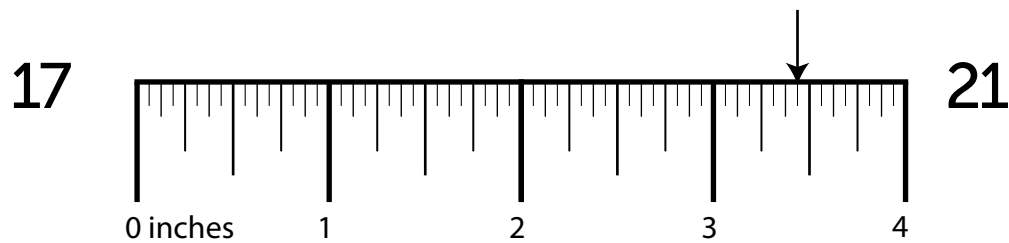
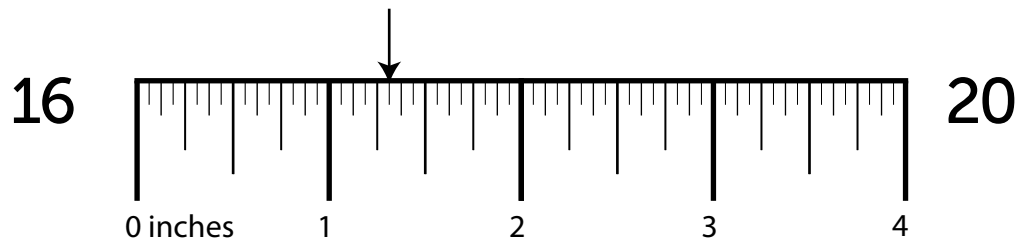
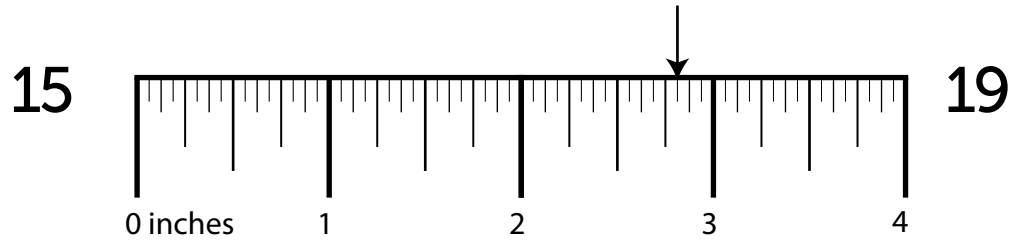
214



Side	Length	Side	Length	Shape	Perimeter
⑨	_____	⑪	_____	A	⑬ _____
⑩	_____	⑫	_____	B	⑭ _____

DRAWING IS NOT TO SCALE

Section III – Ruler Measurements



Section IV – More/Less Than

214

23. What is $\frac{1}{2}$ more than $3\frac{1}{4}$? 27. What is $\frac{1}{8}$ less than $1\frac{1}{2}$?
24. What is $\frac{1}{4}$ less than $3\frac{5}{16}$? 28. What is $\frac{5}{16}$ more than $1\frac{1}{4}$?
25. What is $\frac{3}{16}$ less than $5\frac{3}{8}$? 29. What is $\frac{1}{4}$ less than $5\frac{3}{16}$?
26. What is $\frac{5}{16}$ less than $4\frac{1}{2}$? 30. What is $\frac{1}{2}$ less than $2\frac{3}{8}$?

Section V – Nail Penetration & Screw Hole Bits

How far will a ...

What size drill bit will you need to drill a ...

31. 7 penny nail penetrate a $\frac{1}{2}$ " dry timber?

35. clearance hole for a 6 gauge screw?

32. 8 common gauge nail penetrate a $3\frac{1}{2}$ " green mast?

36. countersink hole for a 6 gauge screw?

33. 9 box gauge nail penetrate a $\frac{3}{4}$ " green plank?

37. clearance hole for a 20 gauge screw?

34. 6 penny nail penetrate a $2\frac{1}{2}$ " green girder?

38. clearance hole for a 7 gauge screw?