

Section I – +/– Feet & Inches

212

1. $11' 7'' - 8' 3'' =$

5. $15' 7'' - 9' 10'' =$

2. $11' 6'' + 9' 3'' =$

6. $10' 7'' + 14' 1'' =$

3. $8' 5'' - 6' 7'' =$

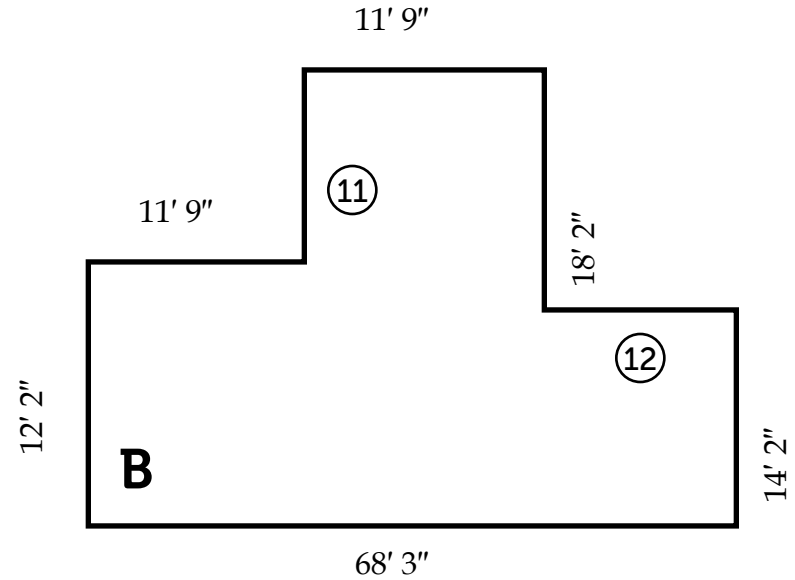
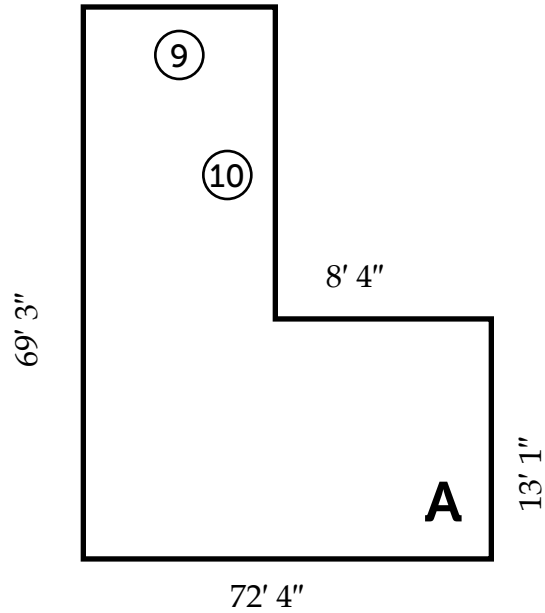
7. $18' 3'' - 2' 11'' =$

4. $9' 8'' + 16' 1'' =$

8. $12' 3'' + 16' 6'' =$

DRAWING IS NOT TO SCALE

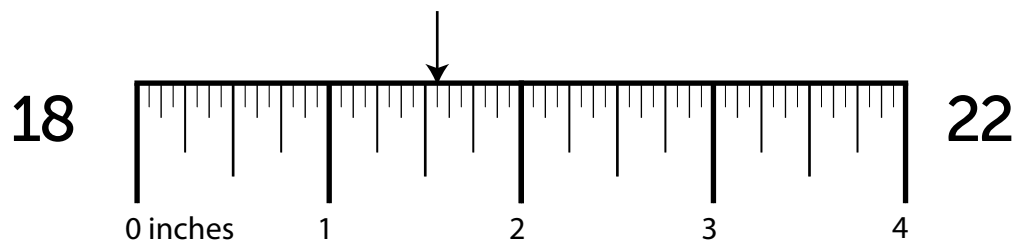
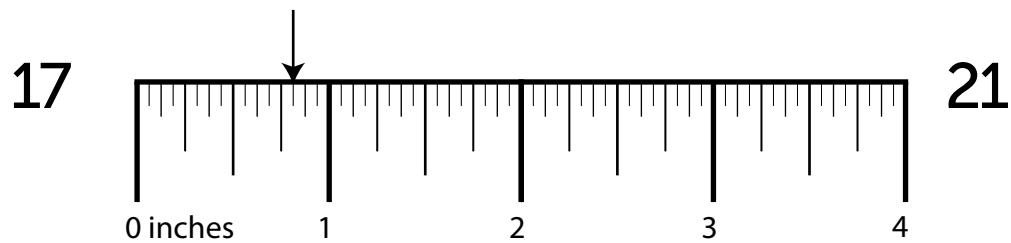
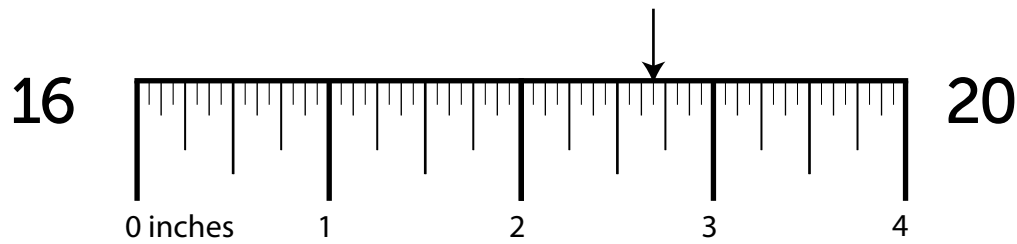
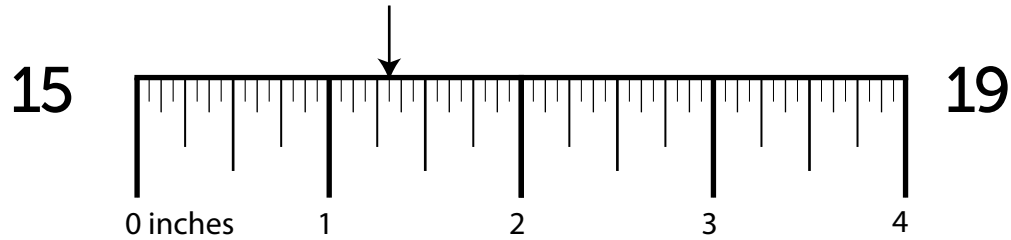
213



Side	Length	Side	Length	Shape	Perimeter
⑨	_____	⑪	_____	A	⑬ _____
⑩	_____	⑫	_____	B	⑭ _____

DRAWING IS NOT TO SCALE

Section III – Ruler Measurements



Section IV – More/Less Than

213

23. What is $\frac{5}{16}$ more than $1\frac{1}{4}$? 27. What is $\frac{1}{2}$ less than $3\frac{1}{4}$?
24. What is $\frac{1}{4}$ less than $4\frac{1}{16}$? 28. What is $\frac{1}{4}$ more than $2\frac{1}{8}$?
25. What is $\frac{1}{4}$ less than $4\frac{1}{2}$? 29. What is $\frac{1}{4}$ less than $3\frac{1}{2}$?
26. What is $\frac{5}{16}$ less than $1\frac{1}{2}$? 30. What is $\frac{1}{2}$ less than $4\frac{1}{8}$?

Section V – Nail Penetration & Screw Hole Bits

How far will a ...

What size drill bit will you need to drill a ...

31. 2 common gauge nail penetrate a 2 ½" dry timber? 35. clearance hole for a 20 gauge screw?

32. 4 penny nail penetrate a ¾" green frame? 36. clearance hole for a 4 gauge screw?

33. 10 penny nail penetrate a 4 ½" green mast? 37. pilot hole for a 9 gauge screw?

34. 10 penny nail penetrate a 4 ½" green rafter? 38. countersink hole for a 8 gauge screw?