

Section I – +/– Feet & Inches

210

1. $12' 5'' + 18' 1'' =$

5. $17' 1'' - 3' 8'' =$

2. $14' 11'' + 18' 5'' =$

6. $9' 11'' - 7' 1'' =$

3. $8' 11'' + 13' 8'' =$

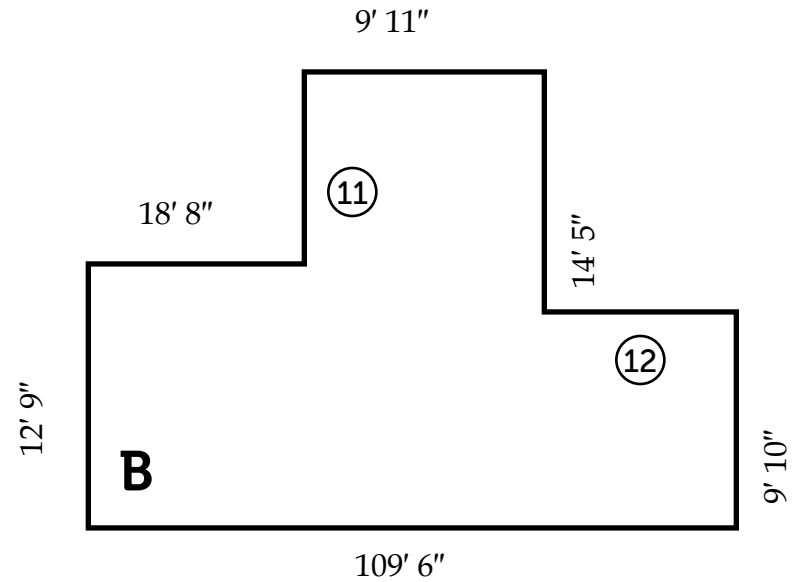
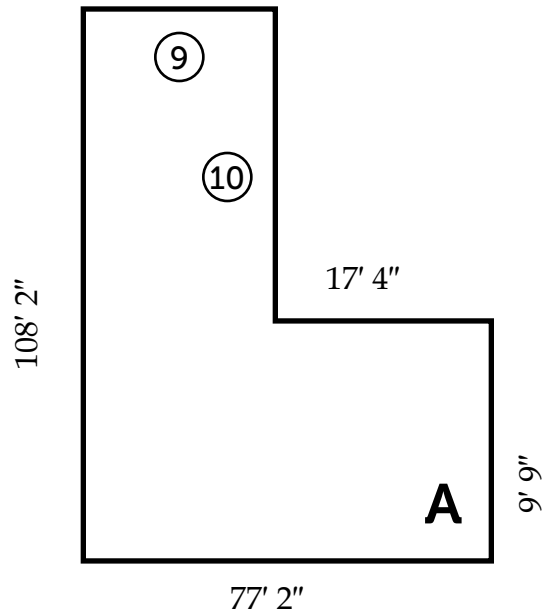
7. $17' 3'' + 16' 3'' =$

4. $14' 2'' + 10' 11'' =$

8. $14' 10'' - 10' 3'' =$

DRAWING IS NOT TO SCALE

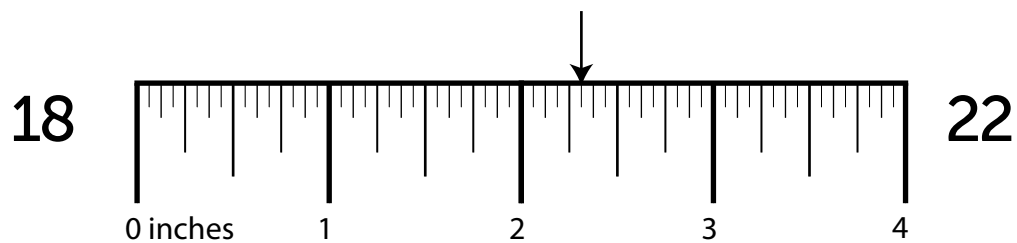
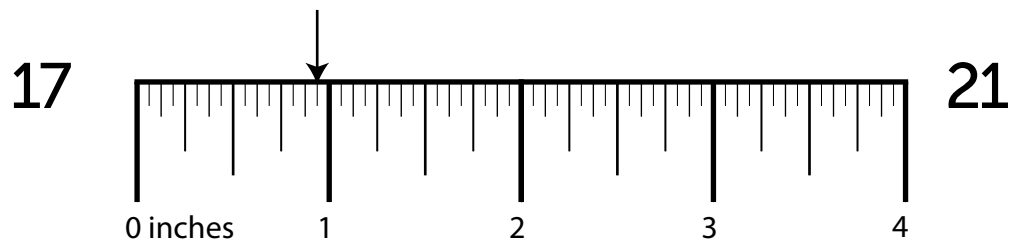
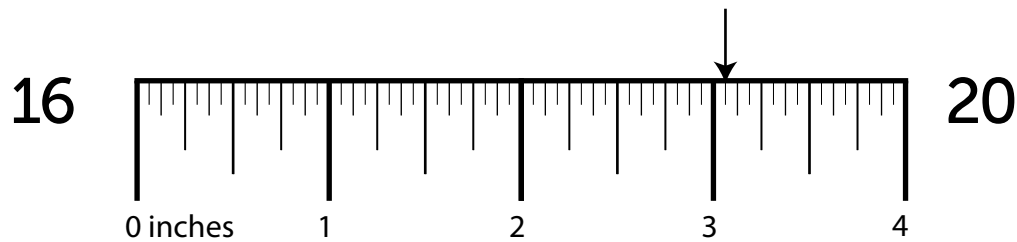
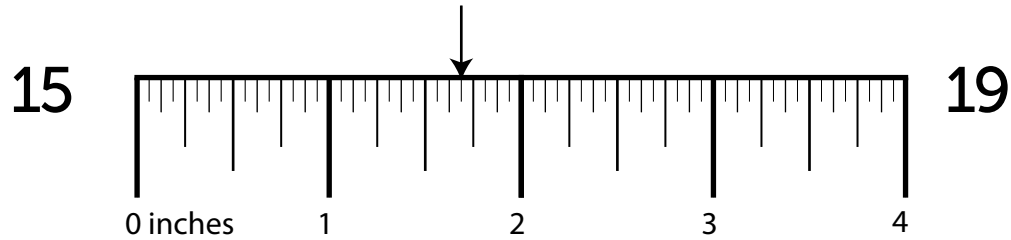
211



| Side | Length | Side | Length | Shape | Perimeter |
|------|--------|------|--------|-------|-----------|
| ⑨ | _____ | ⑪ | _____ | A | ⑬ _____ |
| ⑩ | _____ | ⑫ | _____ | B | ⑭ _____ |

DRAWING IS NOT TO SCALE

Section III – Ruler Measurements



Section IV – More/Less Than

211

23. What is $\frac{3}{16}$ more than $1\frac{1}{2}$? 27. What is $\frac{1}{4}$ more than $1\frac{1}{2}$?
24. What is $\frac{1}{8}$ less than $4\frac{3}{16}$? 28. What is $\frac{1}{4}$ more than $5\frac{3}{16}$?
25. What is $\frac{1}{2}$ less than $2\frac{1}{2}$? 29. What is $\frac{1}{8}$ less than $1\frac{1}{2}$?
26. What is $\frac{1}{4}$ less than $3\frac{5}{16}$? 30. What is $\frac{5}{16}$ more than $4\frac{3}{8}$?

Section V – Nail Penetration & Screw Hole Bits

How far will a ...

What size drill bit will you need to drill a ...

31. 15 ½ box gauge nail penetrate a 3" dry dimension?
32. 11 ½ common gauge nail penetrate a 1" green girder?
33. 10 ½ box gauge nail penetrate a 2" green dimension?
34. 14 box gauge nail penetrate a 3 ½" dry dimension?
35. pilot hole for a 14 gauge screw?
36. clearance hole for a 10 gauge screw?
37. pilot hole for a 6 gauge screw?
38. clearance hole for a 11 gauge screw?