

Section I – +/– Feet & Inches

209

1. $13' 3'' + 11' 5'' =$

5. $9' 2'' + 14' 6'' =$

2. $9' 2'' + 13' 9'' =$

6. $14' 8'' + 8' 11'' =$

3. $15' 5'' + 10' 4'' =$

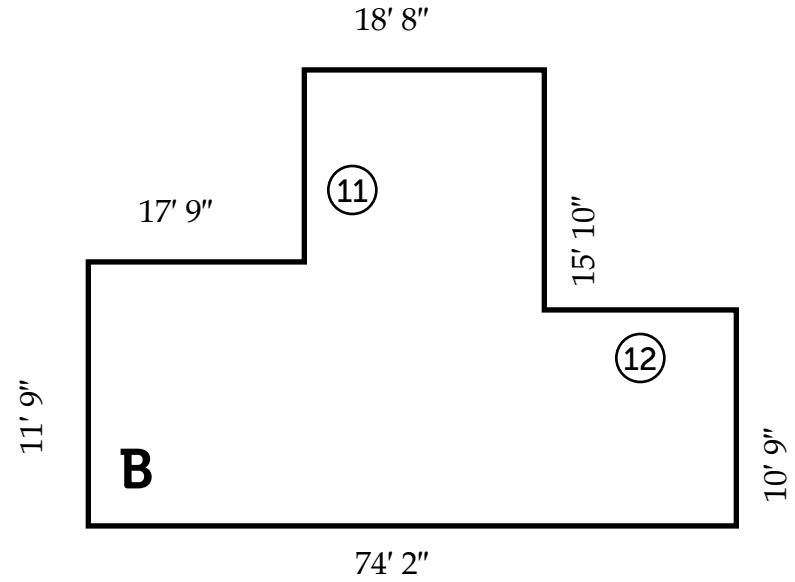
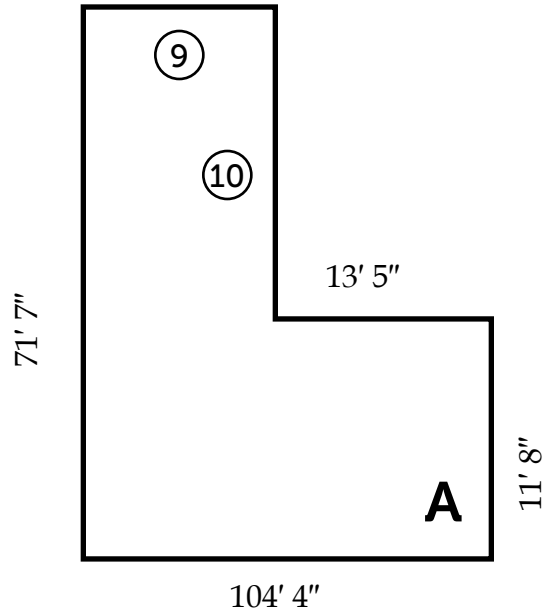
7. $9' 8'' - 5' 4'' =$

4. $8' 10'' + 11' 4'' =$

8. $11' 5'' - 2' 7'' =$

DRAWING IS NOT TO SCALE

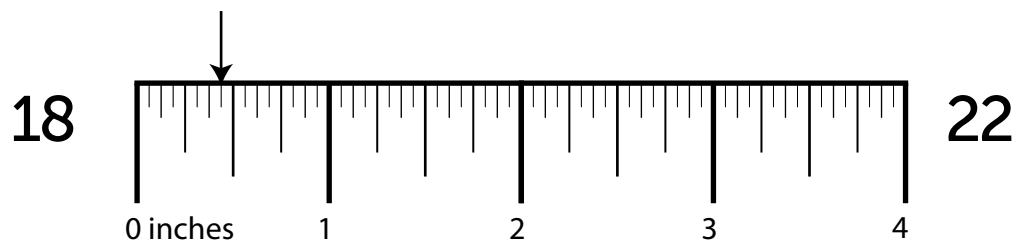
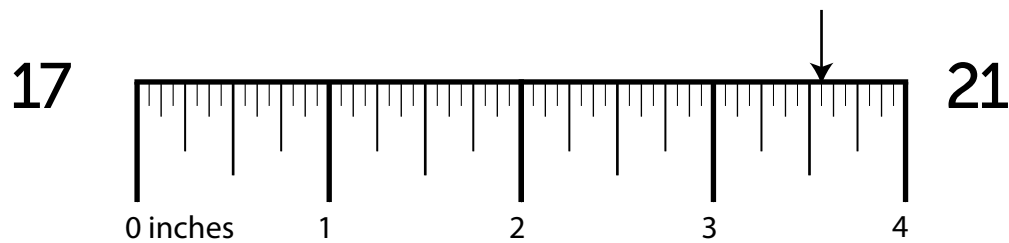
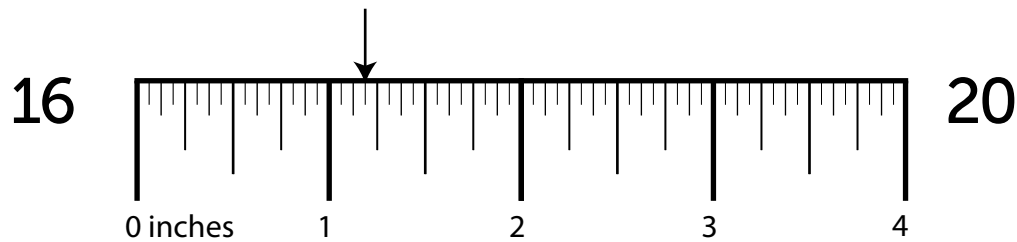
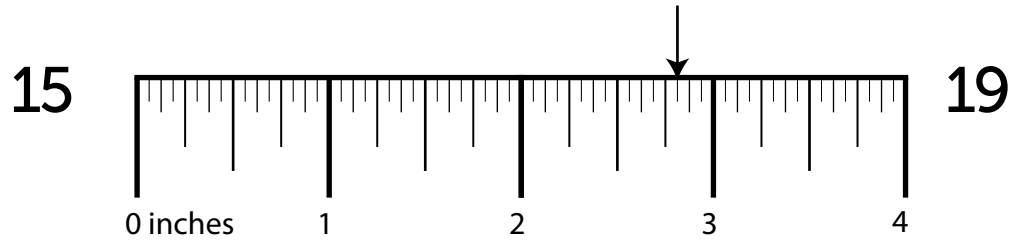
210



Side	Length	Side	Length	Shape	Perimeter
⑨	_____	⑪	_____	A	⑬ _____
⑩	_____	⑫	_____	B	⑭ _____

DRAWING IS NOT TO SCALE

Section III – Ruler Measurements



Section IV – More/Less Than

210

23. What is $\frac{1}{4}$ more than $4\frac{5}{16}$? 27. What is $\frac{3}{8}$ more than $5\frac{3}{8}$?
24. What is $\frac{1}{16}$ less than $1\frac{1}{4}$? 28. What is $\frac{1}{8}$ less than $3\frac{1}{2}$?
25. What is $\frac{3}{8}$ more than $2\frac{1}{4}$? 29. What is $\frac{1}{4}$ less than $2\frac{1}{2}$?
26. What is $\frac{1}{16}$ more than $2\frac{5}{16}$? 30. What is $\frac{5}{16}$ more than $4\frac{1}{4}$?

Section V – Nail Penetration & Screw Hole Bits

How far will a ...

What size drill bit will you need to drill a ...

31. 10 ¼ common gauge nail penetrate a 1" dry joist?

35. clearance hole for a 18 gauge screw?

32. 4 penny nail penetrate a 4 ½" green dimension?

36. countersink hole for a 8 gauge screw?

33. 12 ½ common gauge nail penetrate a 1 ¼" dry joist?

37. clearance hole for a 7 gauge screw?

34. 7 penny nail penetrate a 1" dry dimension?

38. countersink hole for a 1 gauge screw?