

Section I — +/– Feet & Inches

366

1. $16' 11'' - 2' 11'' =$

5. $15' 6'' + 16' 7'' =$

2. $16' 2'' + 10' 4'' =$

6. $17' 1'' - 1' 5'' =$

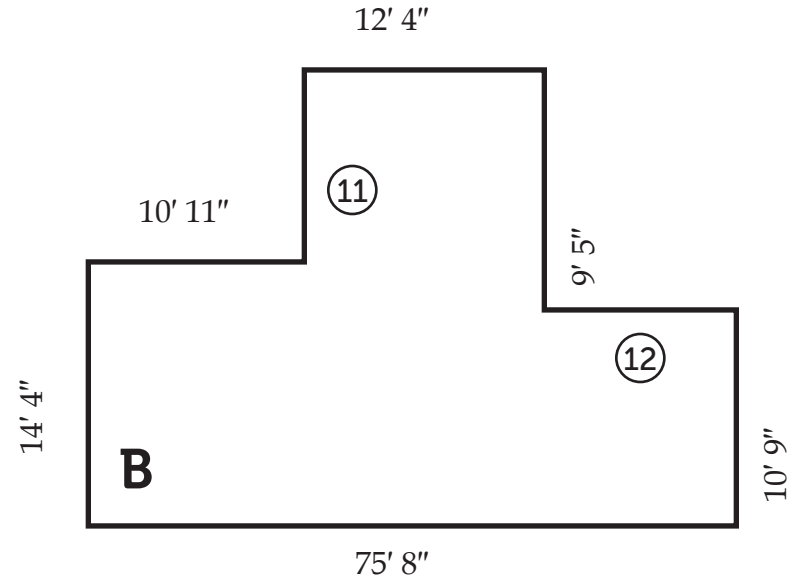
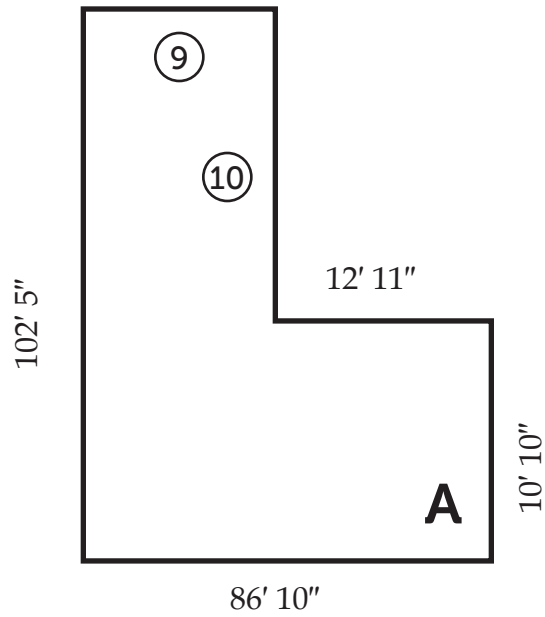
3. $10' 4'' - 8' 11'' =$

7. $13' 9'' + 16' 9'' =$

4. $16' 1'' - 5' 10'' =$

8. $16' 2'' - 10' 2'' =$

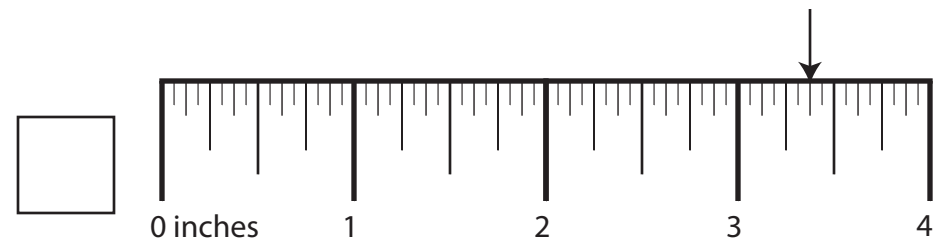
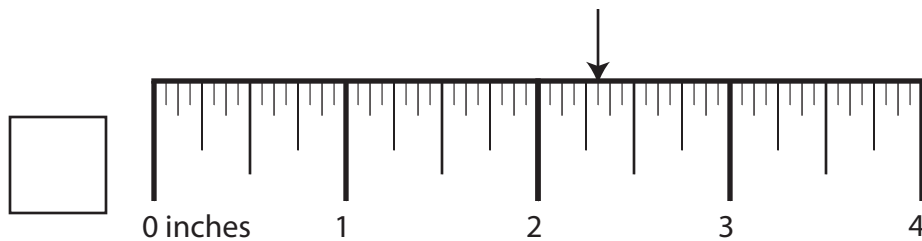
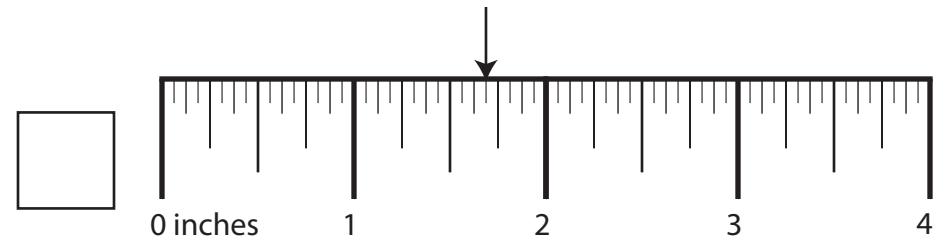
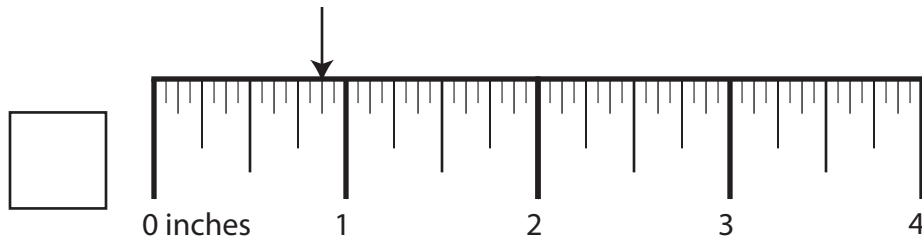
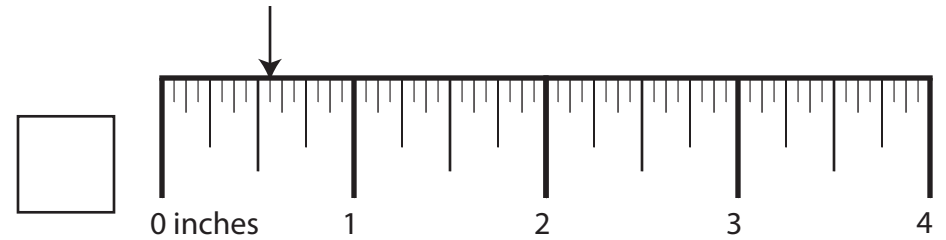
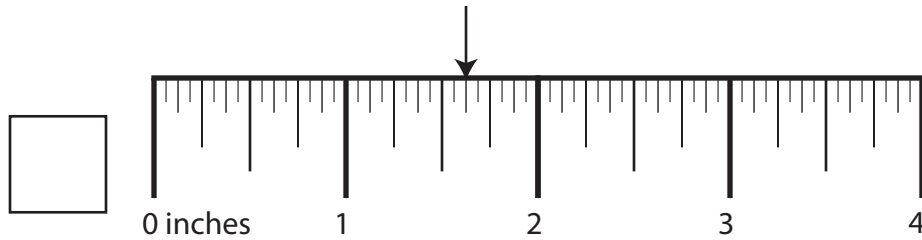
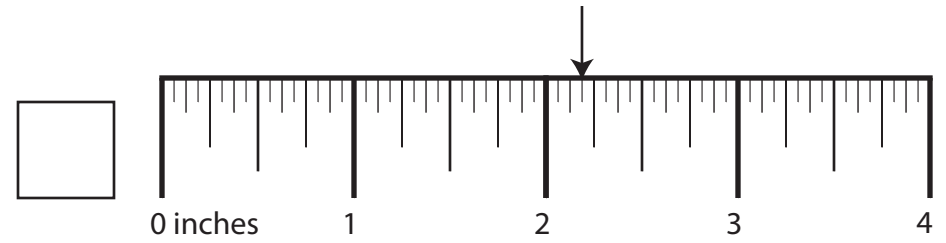
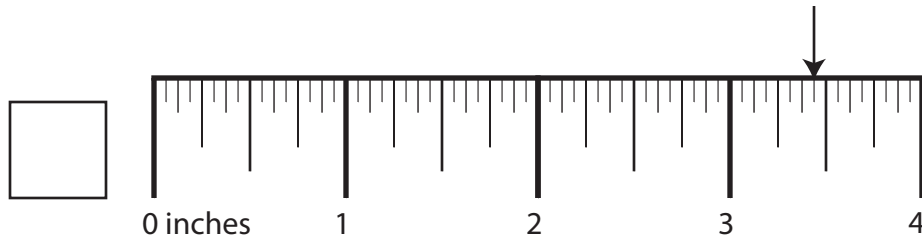
Section II — Find the Missing Side & Perimeter



Side	Length	Side	Length	Shape	Perimeter
⑨	_____	⑪	_____	A	⑬ _____
⑩	_____	⑫	_____	B	⑭ _____

Section III – Ruler Measurements

366



Section IV — More/Less Than

366

23. What is $\frac{3}{8}$ less than $3\frac{5}{16}$? 27. What is $\frac{5}{16}$ less than $1\frac{1}{8}$?
24. What is $\frac{3}{16}$ less than $1\frac{1}{16}$? 28. What is $\frac{3}{16}$ less than $1\frac{1}{4}$?
25. What is $\frac{1}{4}$ more than $2\frac{3}{8}$? 29. What is $\frac{1}{2}$ less than $3\frac{1}{8}$?
26. What is $\frac{3}{16}$ more than $4\frac{1}{2}$? 30. What is $\frac{1}{2}$ more than $4\frac{1}{8}$?

Section V — Nail Penetration & Screw Hole Bits

366*How far will a ...*

31. 10 $\frac{1}{4}$ common gauge nail penetrate a 1 $\frac{1}{2}$ " dry board?

What drill bit do you need to drill a ...

[Remember, # or letter only, except 27/64, 14/32, 29/64]

35. clearance hole for a 3 gauge screw?

32. 14 box gauge nail penetrate a 4" green beam?

36. clearance hole for a 18 gauge screw?

33. 8 box gauge nail penetrate a $\frac{1}{2}$ " dry dimension?

37. clearance hole for a 24 gauge screw?

34. 6 penny nail penetrate a $\frac{1}{2}$ " green joist?

38. pilot hole for a 24 gauge screw?

Section VI — **Math** Calculations**366**

39. How many pounds of CO₂ are released by burning propane for 3 days in a ULT 155?
40. How many pounds of CO₂ are released by burning 109 pounds of Ponderosa Pine?
41. Room C's Wall #1, made of Timber, ash, if inside is 73°F and outside is 103°F?
42. Room A's Floor, made of Rock Wool insulation, if inside is 80°F and outside is 29°F?
43. How many mmBTUs are generated by running a ET 199-H for 10 weeks?
44. How many pounds of CO₂ are released by burning 306 pounds of Black Ash?
45. How many pounds of CO₂ are released by burning 288 pounds of Beech?
46. Dodecane cycle, 1070 (lb/hr) flowrate, outside is 42°F, inside 79°F?

Section VI — **Math** Calculations**366**

47. How many mmBTUs are generated by burning 375 pounds of Yellow Birch?
48. How many mmBTUs are generated by running a EVG 220 for 5 days?
49. Room B's Wall #4, made of Tar, if inside is 58°F and outside is 61°F?
50. Room B's Ceiling, made of Wool, felt, if inside is 60°F and outside is 53°F?
51. How many pounds of CO₂ are released by burning Anthracite coal for 6 months in a CGa-5?
52. How many pounds of CO₂ are released by burning natural gas for 4 months in a CGa-4?
53. How many mmBTUs are generated by burning 55 pounds of Hickory?
54. How many mmBTUs are generated by burning 67 pounds of White Ash?

Section VII – Blueprint Calculations

366

55. Shape B, Scale = 8, tile job.

59. Shape H, Scale = 32, caulking job.

56. Shape B, Scale = 50, panel job.

60. Shape R, Scale = 24, carpet job.

57. Shape D, Scale = 50, tile job.

61. Shape L, Scale = 36, panel job.

58. Shape G, Scale = 30, baseboard job.

62. Shape Q, Scale = 15, wire job.